

ANTI TWO BLOCK SYSTEM
THE SAFETY DEVICE CONNECTED TO THE HOIST MICRO LIMIT SWITCH

According to crane safety requirements, all parts of this device have been designed in conformity with the rules of current MACHINE DIRECTIVE STANDARDS.

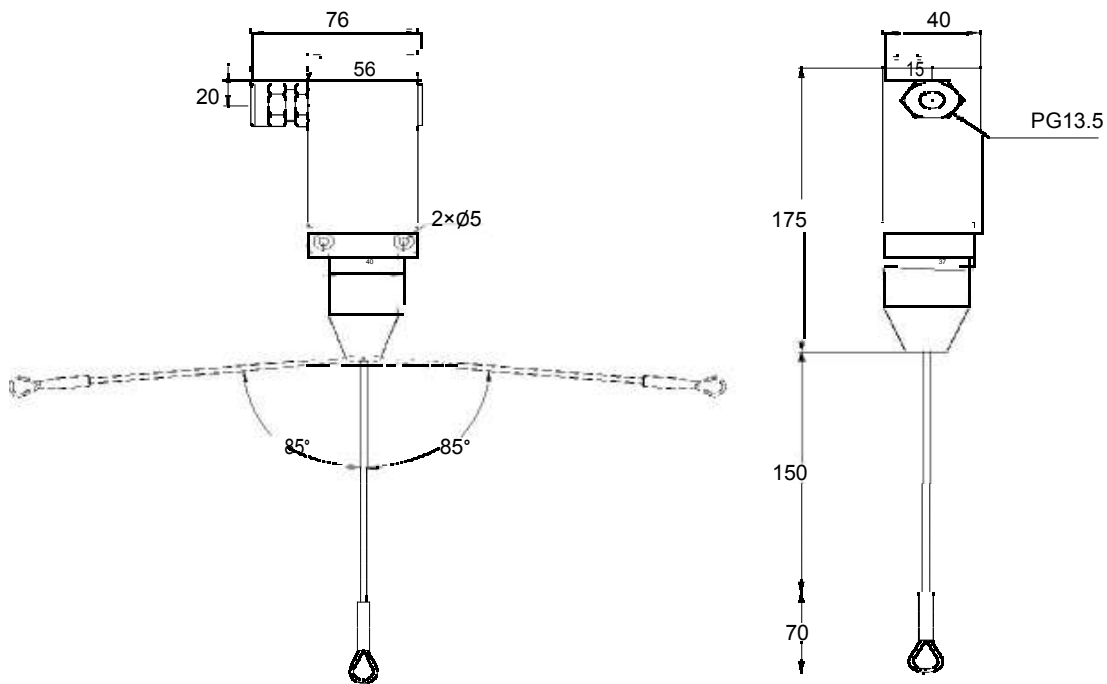
It has been designed to perform very easy installation on any kind of machines: from the largest and most complex lattice boom cranes to the simplest and smallest hydraulic cranes.

The device uses an actually simple and reliable spring mechanic, including a micro switch with normally closed contacts, as stated by CE Standards. If the hoist is lifted over its limit, the contact opens and the alarm function is activated.

The system can be directly interfaced to 3B6 load limiters; in this case the electronic main unit manages the alarm by the front panel and the automatic lifting cut-off. It identifies short-circuits on the connecting cable, distinguishing them from normal limit switch operation, informing the operator by means of panel warning function and in case, activating an emergency device.

As an option the device can be supplied with a chain and 5kg counter weight.

Housing with output cable rated IP67.



280 Woodlands Industrial Park E5 #02-41 Harvest @ Woodlands Singapore 757322

Tel: +65 65611002 Fax: +65 65612003

E-mail : sales@novatestings.com - Website : www.novatestings.com