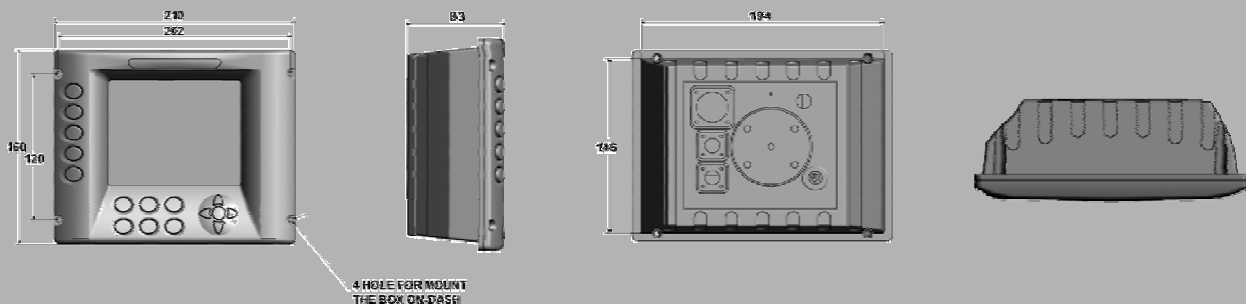


The View display unit, in different available configurations, may perform as main CPU or single remote display as system global control.

- Display Colour 5.7" (Display: Horizontal)
 - Effective area 115.2(W) x 86.4(H) mm.
 - Resolution 320 x 240 pixels
 - Viewing angle 130°
 - Brightness 350 cd/m2
 - Backlight type: Cold Cathode Fluorescent Tube
- OUT dash or ON dash versions available



MECHANICAL DIMENSIONS



TECHNICAL DATA

CONTROL SYSTEM:

- Microprocessor Motorola HCS12 – 25 MHz Internal Clock
- Ram 108 KB program data
- Ram 160 KB frame buffer
- Flash 256 KB code
- Flash 1 MB fonts and icons storage

INTERFACES CONFIGURATION:

- 1 CAN-BUS interface, Standard CAN 2.0B
- 1 serial interface RS232
- 1 CAN-BUS interface, Standard CAN 2.0B (Optional for **Central Unit** version only)
- 1 serial interface RS232 (Optional for **Depth** and **Weighing** version only)

ELECTRICAL CHARACTERISTICS:

- Operating Power Supply Voltage: +9 V to +30 V DC

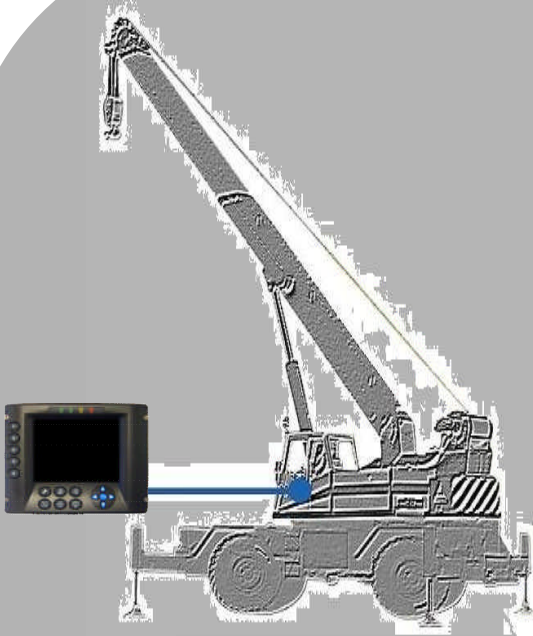
CERTIFICATIONS:

The VIEW unit (all models) is conformed to the following directives and standards required by 89/336 CE, according to automotive standards:

- 1) EMC generic standards for emission, heavy industrial environment:
 - Reference standard: EN 61000-6-4
 - Base standard: EN 55011 (Radiated RF emissions)
- 2) Electromagnetic immunity:
 - Reference standard: EN 61000-6-2
 - Base standard: EN 61000-4-2 (Electrostatic discharge);
EN 61000-4-3 (Radiated RF immunity);
EN 61000-4-4 (Fast transient "Burst");
EN 61000-4-6 (Conducted RF immunity)

MECHANICAL CHARACTERISTICS AND RATINGS:

- Protection: IP65
- Operative Temperature Range: -20°C +70°C
- Storage Temperature Range: -30°C +80°C



Hydraulic crane



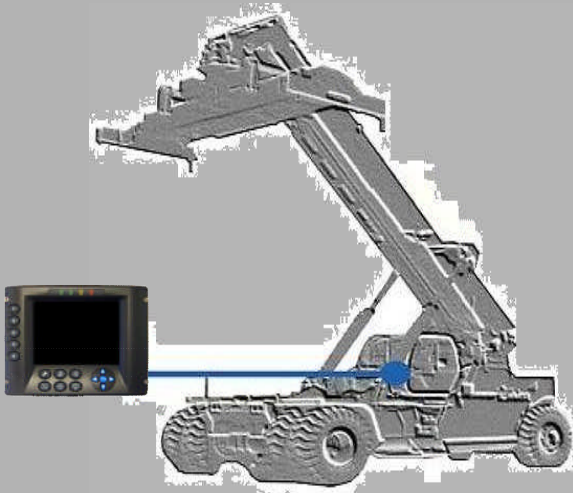
ANTI TWO BLOCK

Anti-two-block safety device.
Includes an electro-mechanical spring loaded switch,
Supplied with 5 Kg counterweight.
For any winch or hook lifting application.
Housing with output cable rated IP67



LENGTH / ANGLE SENSOR

Available in 12, 20, 32 and 40 meters size.
Integrated accelerometer based angle sensor.
3 slip rings assembly included; optional up to seven.
Analogue or CAN BUS outputs.
Rated with IP66 housing.



Stacker



PRESSURE TRANSDUCERS

Voltage or current analog output.
Hydraulic side connection 1/4" BSPP threads.
Rated with IP65 stainless steel housing.
DIN 43650 standard connector.
Optional IP68 version with Cannon connector.

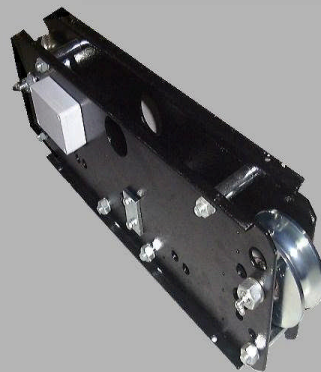


LOAD CELL

A wide range of traction, compression, pin,
flexion load cell for detection force.
Available in different sizes and upon customer
design used on retrofit cranes in conjunction with
AOL amplifier.



Lattice boom crane



ROPE DYNAMOMETER

Tension rope detecting device, based on the use of
three pulleys.
Central one equipped with pin load cell.
Available in different sizes according to rope
diameter.
Includes load cell amplifier.



ANGLE SENSOR

Accelerometer based technology.
Available in single (Boom Angle)
or dual axis (undercarriage level) versions,
analogue or CAN BUS output.
Angle measuring by gravitational force reference,
able to resist up to 50.000 g
Mil connector