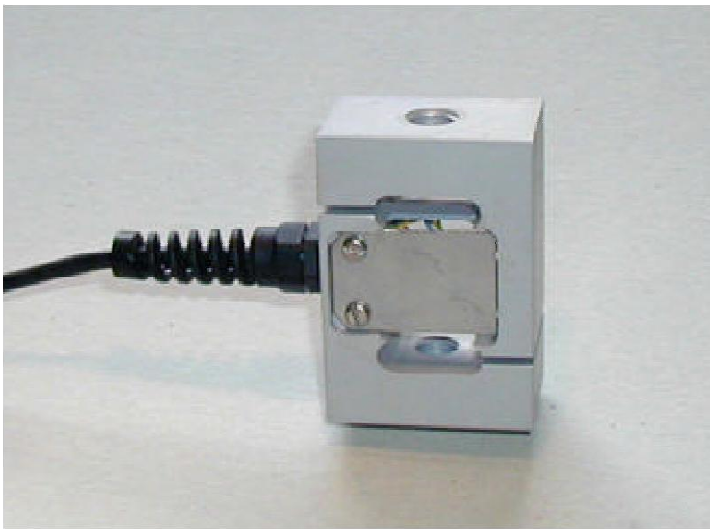


Series 2010 universal load cell



- **Versatile**
- **High Accuracy**
- **Aluminium**
- **Connector option**

Description

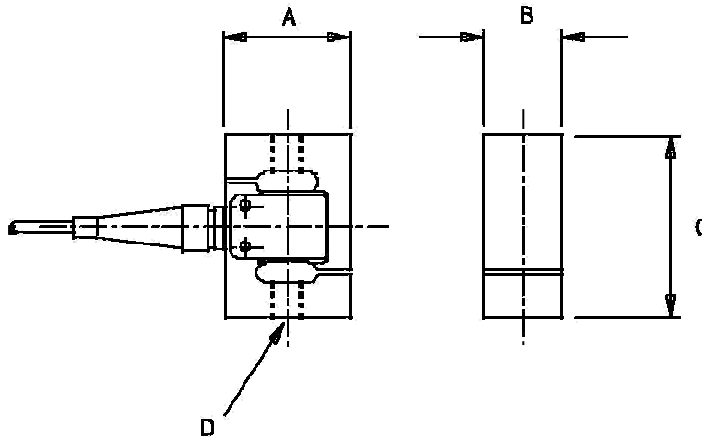
A range of aluminium "S" beam type load cells for use in general weighing applications.

Sealed and potted construction ensures total environmental protection coupled with good long term stability.

Optional Bi-directional calibration.

A full range of instrumentation and control packages from simple stand alone displays to complete turn key systems are available to support all Active Load sensors.
Details and specifications available from our Sales office.

Dimensions



Specification Group..... SP1

ELECTRICAL		
Recommended Excitation	10	Vdc
Maximum Excitation	15	Vdc
Output at rated load	2	mV/V
Zero balance	5	% of RL
Input impedance	420	+/-20
Output impedance	350	+/-3
Insulation	10 ⁹	ohms
Compensated temp.	10 to 40	°C
Safe temp. range	-30 to 70	°C
MECHANICAL		
Safe Overload	150	% of RL
Ultimate Overload	300	% of RL
Deflection	<0.5	mm
Cable type	4-C	screened
Cable length	3	M
Sealing	IP65	

Accuracy Class..... C2

ACCURACY		
Non linearity & hysteresis	0.05	%
Non repeatability	0.02	%
Zero return (after 30 minutes)	0.04	%
Temp. effect/10 C on zero	0.10	%
Temp. effect/10 C on span	0.10	%

Note:

Maximum errors (+/-) are expressed as a percentage of rated load (when measured at 10Vdc excitation). The linearity and hysteresis is the maximum deviation from a straight line drawn between the no load and the rated load outputs for both increasing and decreasing loads. Accuracy classes apply when active range (live weight) is within 20 to 90% of rated load.

Table

RATING kg.	A mm	B mm	C mm	D mm
10	50	30	70	M12 x 1.75p
25	50	30	70	M12 x 1.75p
50	50	30	70	M12 x 1.75p
100	50	30	70	M12 x 1.75p
250	50	30	70	M12 x 1.75p
500	70	40	108	M20 x 1.50p
1000	70	40	108	M20 x 1.50p
2500	70	40	108	M20 x 1.50p

Wiring

