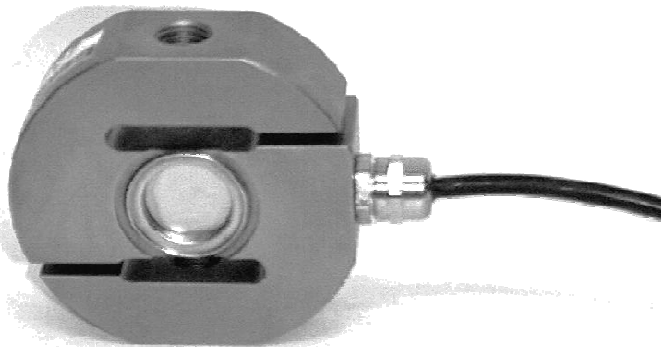




NOVA TESTINGS PTE LTD
280 Woodlands Industrial Park E5
#02-41 Harvest @ Woodlands Singapore 757322
Tel: +65 6561 1002/6 Fax: +65 6561 2003
E-mail: sales@novatestings.com
Website: www.novatestings.com

Series 2060 universal load cell



- **Fully welded**
- **High Accuracy**
- **Stainless steel**
- **Optional fittings**

Description

A range of "S" beam type load cells for use in general weighing applications.

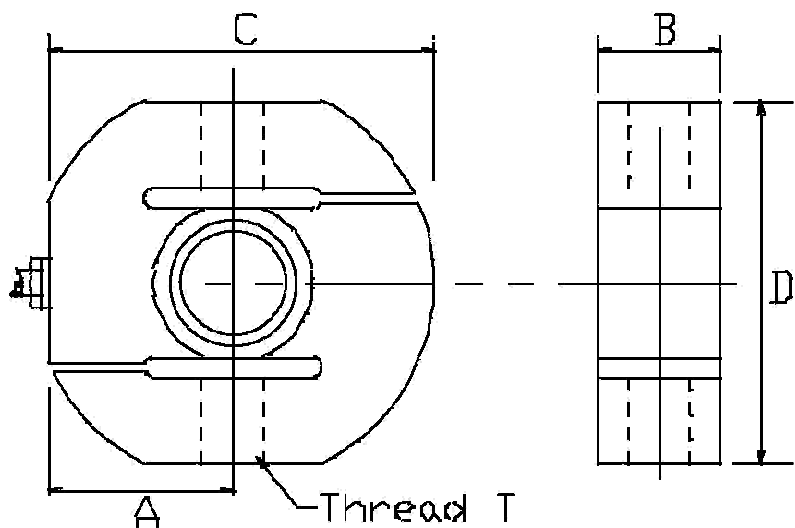
Stainless steel construction with fully welded covers makes the Series 2060 ideally suited for use in arduous applications.

Options available include eye bolts, compression fittings and bi-directional calibration.

A full range of instrumentation and control packages from simple stand alone displays to complete turn key systems are available to support all Active Load sensors. Details and specifications available from our Sales office.

EXCELLENCE IN TRANSDUCER DESIGN

Dimensions



Specification Group..... SP2

| ELECTRICAL | | |
|------------------------|-----------|----------|
| Recommended Excitation | 10 | Vdc |
| Maximum Excitation | 15 | Vdc |
| Output at rated load | 2 | mVV |
| Zero balance | 2 | % of RL |
| Input Impedance | 410 | +/-20 |
| Output impedance | 350 | +/-2 |
| Insulation | 10^9 | |
| Compensated temp. | -10 to 40 | C |
| Safe temp. range | -20 to 70 | C |
| MECHANICAL | | |
| Safe Overload | 150 | % of RL |
| Ultimate Overload | 300 | % of RL |
| Deflection | <0.5 | mm |
| Cable type | 4-C | screened |
| Cable length | 3 | M |
| Sealing | IP68 | |

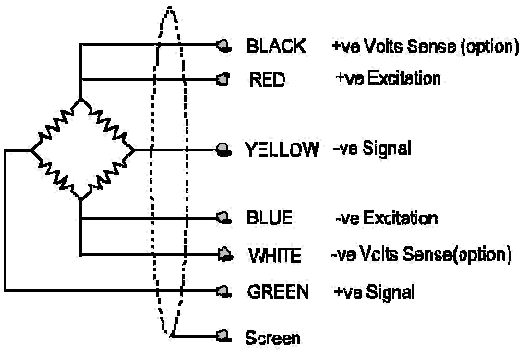
Table

| RATING kg. | A mm | B mm | C mm | D mm | T mm |
|---------------|---------|---------|---------|---------|-------------|
| 250 | 35 | 24.5 | 72.5 | 70 | M12 x 1.75p |
| 500 | 35 | 24.5 | 72.5 | 70 | M12 x 1.75p |
| 1000 | 45 | 30 | 95 | 95 | M20 x 1.5p |
| 2000 | 45 | 30 | 95 | 95 | M20 x 1.5p |
| 5000 | 57.5 | 40 | 120 | 120 | M24 x 2.0p |
| 10,000 | 65 | 55 | 141 | 145 | M30 x 2.0p |
| 20,000 | 88 | 70 | 188 | 190 | M45 x 3.0p |

Accuracy Class..... B3

| ACCURACY | | |
|--------------------------------|-------|---|
| Non linearity & hysteresis | 0.03 | % |
| Non repeatability | 0.01 | % |
| Zero return (after 30 minutes) | 0.04 | % |
| Temp. effect/10 C on zero | 0.015 | % |
| Temp. effect/10 C on span | 0.02 | % |

Wiring



Note:
Maximum errors (+/-) are expressed as a percentage of rated load (when measured at 10Vdc excitation). The linearity and hysteresis is the maximum deviation from a straight line drawn between the no load and the rated load outputs for both increasing and decreasing loads. Accuracy classes apply when active range (live weight) is within 20 to 90% of rated load.

