

2450 Telemetry load link



Description

A range of plate type links incorporating Active Loads proven strain gauge technology. Manufactured from high tensile aluminium and anodize for a clean finish. This telemetry unit has been proven to be reliable for most applications. Because of the low power transmitter used there is no requirement for special licences. Being battery operated the care of the batteries are of prime importance. The antennas are industrial standard type that are readily available worldwide.

- ▶ Tensile load measurement
- ▶ Easily employed
- ▶ Measurement range of 80M
- ▶ High strength aluminium alloy link.
- ▶ Package in carrying case
- ▶ No licence required

www.novatestings.com

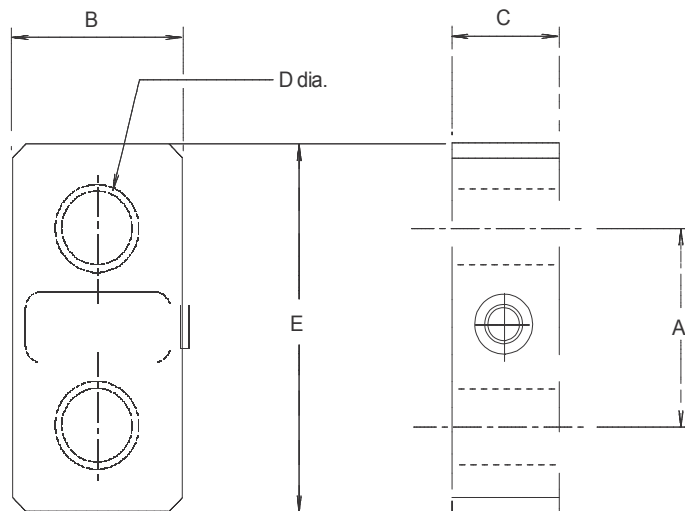
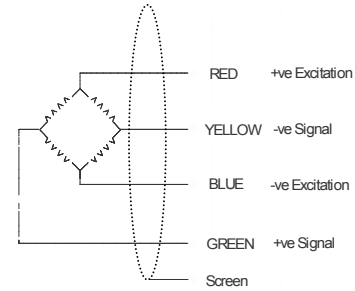
Specifications

ELECTRICAL	
Recommended excitation	10 Vdc.
Maximum excitation	15 Vdc.
Output at rated load	1.5mV/V
Zero balance	5% of RL
Input impedance	700ohms +/-20
Output impedance	700ohms +/- 3
Insulation	>10 ⁹ ohms
Compensation temp range	10 to 60 C
Safe temp range	-30 to 70 C

MECHANICAL	
Safe overload	150% of RL
Ultimate overload	300% of RL
Deflection	<0.5mm
Cable type	4 core screened
Cable length	10 M
Sealing	IP66

Accuracy

Non linearity & hysteresis	0.15%
Non repeatability	0.05%
Zero return (after 30 mins).	0.05%
Temp effect/10deg C on zero	0.01%
Temp effect/10deg C on span	0.01



Rating	'A'	'B'	'C'	'D'	'E'	Weight
te	mm	mm	mm	mm	mm	kg
1 & 2	108	105	40	30	164	1.4
5	108	105	40	30	164	1.4
12	120	105	40	38	210	1.9
25	131	125	55	53	255	4
35	147	135	55	60	305	5
50	170	150	75	73	345	9
100	228	220	123	100	455	27
250	330	304	189	145	680	87
300	347	320	190	153	725	120

Note:

We reserve the right to change specification as deemed necessary with continuous improvement.

