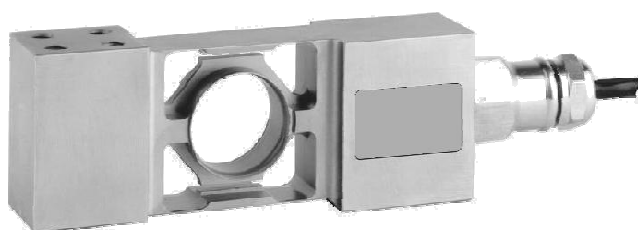




NOVA TESTINGS PTE LTD
280 Woodlands Industrial Park E5
#02-41 Harvest @ Woodlands Singapore 757322
Tel: +65 6561 1002/6 Fax: +65 6561 2003
E-mail: sales@novatestings.com
Website: www.novatestings.com

Type PC6 load cell



- **High Accuracy**
- **Stainless Steel Construction**
- **Resistant to off axis loads**
- **Allows vessel expansion**

Description

Flintec load cells are designed to meet the most stringent accuracy requirements. Certifications have been obtained from Weights & Measures Authorities, worldwide. The PC1 platform load cells are available in the capacities 6kg to 200 kg and include Accuracy Classifications GP, C3, C3 MI 6 and C4 according to OIML R 60; NTEP nmax=4500.

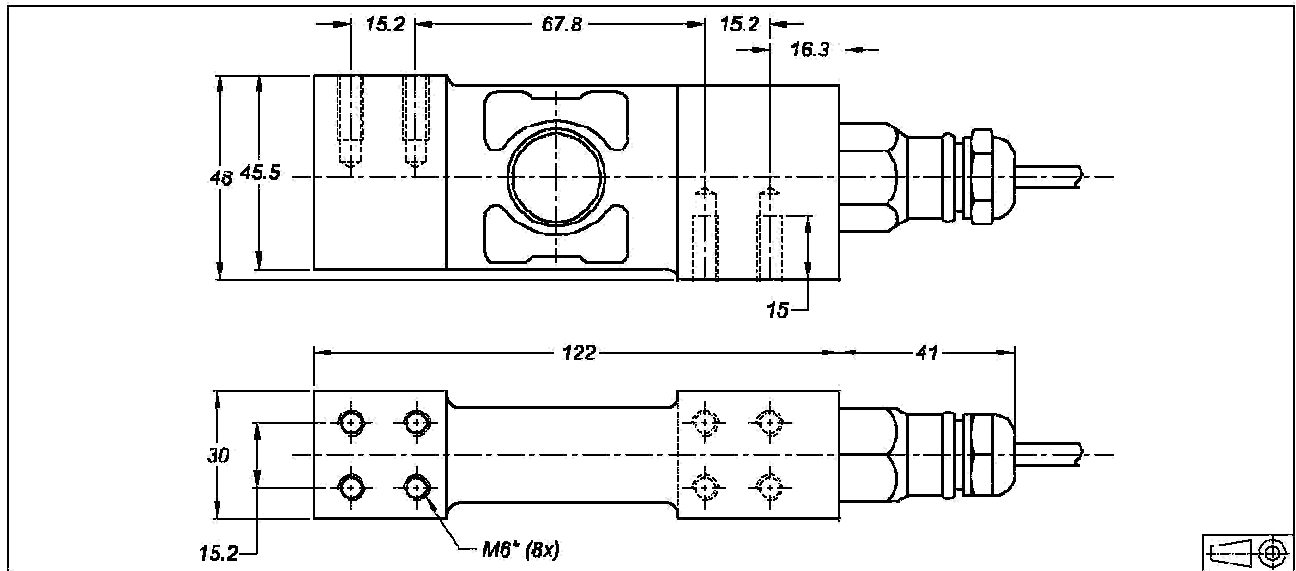
They offer stainless steel construction and improved potting, making them suitable for use in tough industrial environments.

Designed to withstand shock and fatigue loading.

The off center load performance according OIML allows a maximum platform size of 600 × 600mm.

The PC6 is available for use in hazardous areas zone 1, 2 (gas) and 21, 22 (dust) according to E Exiall CT6...T4 T1 30°C ATEX.

Dimensions



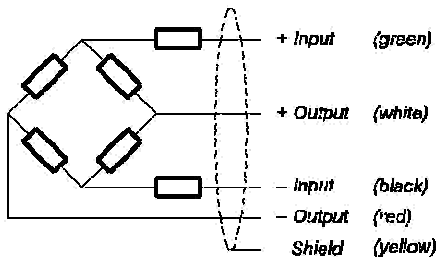
All dimensions in mm. Dimensions and specifications are subject to change without notice.

Mounting bolts M6 8.8; torque 10 Nm. Torque value assumes oiled threads.

* Unified thread 1/4-20 UNC is available.

PC6 Specifications

Maximum capacity ($\pm E_{\max}$)	kg	20 / 50 / 100 / 200			50 / 100 / 200
Rated Output (=RO)	mV/V	2 \pm 5 %			
Accuracy class according to OIML R 60		(GP)	C3	C3 MI 6	C4
Maximum number of verification intervals (n)		n.a.	3000	3000	4000
Minimum load cell verification interval (v)		n.a.	$E_{\max}/10000$		
Combined error	%RO	± 0.040	± 0.020	± 0.020	± 0.018
Creep error (30 minutes)	%RO	± 0.060	± 0.024	± 0.013	± 0.018
Temperature effect on minimum dead load output	%RO/°C	± 0.0040	± 0.0012	± 0.0012	± 0.0012
Temperature effect on sensitivity	%/°C	± 0.0020	± 0.0011	± 0.0011	± 0.008
Excitation voltage	V	5...15			
Zero balance	%RO	± 1.0			
Input resistance		1108 \pm 10			
Output resistance		960 \pm 50			
Insulation resistance	M	5000			
Compensated temperature range	°C	-10...+40			
Operating temperature range	°C	-40...+80			
Safe load limit	% E_{\max}	200			
Ultimate load	% E_{\max}	300			
Safe side load	% E_{\max}	100			
Maximum platform size; loading according OIML	mm	$\times 5000$			
Maximum off center distance at maximum capacity	mm	200			
Load cell material		stainless steel 17-4 PH (1.4548)			
Sealing		complete hermetic sealing; cable entry sealed by glass to metal header			
Protection according DIN 40.050		IP 68			



Wiring

- The load cell is provided with a shielded, 4 conductor cable.
- Cable length: 3 m
- Cable diameter: 5 mm
- The shield is connected to the load cell body.

Note:

Maximum errors (+/-) are expressed as a percentage of rated load (when measured at 10Vdc excitation). The linearity and hysteresis is the maximum deviation from a straight line drawn between the no load and the rated load outputs for both increasing and decreasing loads. Accuracy classes apply when active range (live weight) is within 20 to 90% of rated load.