



# NOVA TESTINGS PTE LTD

*Innovative Measurement Electronics*

## LOW PROFILE MINI DISK

### APPLICATIONS

- Low profile platforms
- Hoppers & tank weighing
- Process weighing
- Hostile environments
- Industrial weighing
- Mini disk applications



### FEATURES

- Miniature compression type
- Replaces similar low cost models
- Rugged tool steel construction  
\*25 & 50kg aluminium
- Designed for economical weighing
- Corrosion resistant electroless nickel plated
- Standard compression mount available
- Simple installation
- 1 year warranty
- Sealed to IP67 standards
- ISO 9001 certified manufacturing facilities






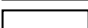
# Model LPX

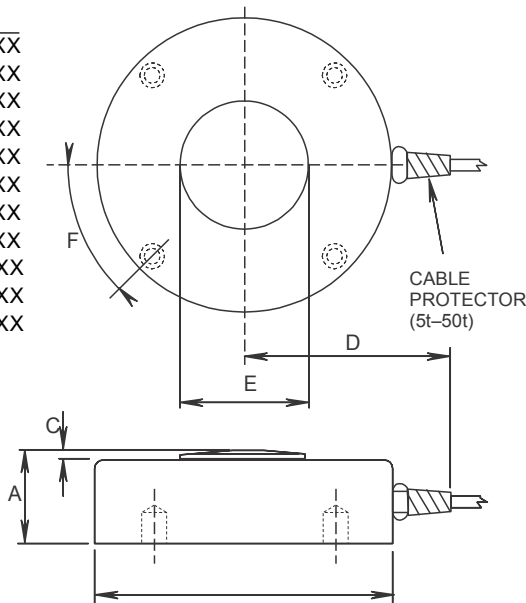
LOW PROFILE MINI DISK LOAD CELL 25, 50, 100, 250, 500, 1000kg 2.5, 5, 10, 25, 50t

## Ordering Information

Model	Part Number
LPX-25	LXM0025T000XXX
LPX-50	LXM0050T000XXX
LPX-100	LXM0100T000XXX
LPX-250	LXM0250T000XXX
LPX-500	LXM0500T000XXX
LPX-1000	LXM1000T000XXX
LPX-2500	LXM2500T000XXX
LPX-5000	LXM5000T000XXX
LPX-10000	LXM010TT000XXX
LPX-25000	LXM025TT000XXX
LPX-50000	LXM050TT000XXX

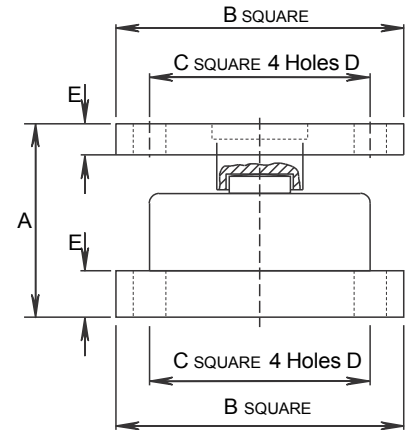
## Cable Colour Code

Excitation +ve	
Sense +ve	
Excitation -ve	
Sense -ve	
Signal +ve	
Signal -ve	



## Accessories

The complete mount below is used with the LPX in compression load applications. This mount has convenient bolt holes located on both the top and bottom plates, integral side restraint is accommodated by the special restraining socket.



Note: Only 6 core cable has Senserm (25kg-2500kg 4 core)

## Load Cell Dimensions

Capacity	A	B	C	D	E	F
25-1000kg	22	52	4	30	10	M5 x 0.8 on 44 PCD
2.5t	25	52	4	30	10	M5 x 0.8 on 44 PCD
5.0t	30	100	5	95	20	M6 x 1.0 on 85 PCD
10.0t	35	100	5	95	20	M6 x 1.0 on 85 PCD
25.0t	50	115	10	100	32	M12 x 1.75 on 90 PCD
50.0t	55	155	12	125	45	M12 x 1.75 on 130 PCD

## Accessory Dimensions

Capacity	A	B	C	D	E	F
25-1000kg	55	100	65	Ø 14	11.5	11.5
2.5t	58	100	65	Ø 14	11.5	11.5
5.0t	76	125	100	Ø 14	15	15
10.0t	81	125	100	Ø 14	15	15
25.0t	100	150	115	Ø 17	24	16
50.0t	115	180	135	Ø 17	31	16

Dimensions are shown in millimeters and capacities are in kgs/metric tons

## Specifications

Nominal capacity	25kg to 50000kg	Input Resistance	410 ohms nominal
Nominal output at capacity	2.0 mV/V ±0.1%	Service Load	100% of capacity Safe
Factory calibration mode	compression	Load	150% of capacity
Linearity error	0.1%	Mechanical Failure	>300% of capacity
Repeatability	0.07%	Recommended Excitation	5V to 20V ac/dc
Zero return, creep (30 mins)	0.07%	Maximum Excitation	25V dc
Temperature Effect on Span/10° C	0.01%	Cable Type	4 or 6 conductor screened
Temperature Effect on Zero/10° C	0.07%	Cable Length	25kg-2.5t 3 Metres 4 Core
Insulation Resistance - brg. to gnd	>5000 M ohms		5t-10t 5 Metres 6 Core
Insulation Resistance - cbl. to gnd	>1000 M ohms		25t-50t 10 Metres 6 Core
Compensated temp. range	-10° C to 50° C	Environmental Protection	IP67 Standard
Output Resistance	351 ohms nominal		

Note: All specifications are a maximum, as a % (±) of full load, unless otherwise stated.

## NOVA TESTINGS PTE LTD

*Innovative Measurement Electronics*

Sales & Product Information

280 Woodlands Industrial Park E5 #02-41

Harvest @ Woodlands Singapore 757322

Tel : (65) 6561 1002 Tel : (65) 6561 1006 Fax : 6561 2003

E-mail : sales@novatestings.com

[www.novatestings.com](http://www.novatestings.com)

